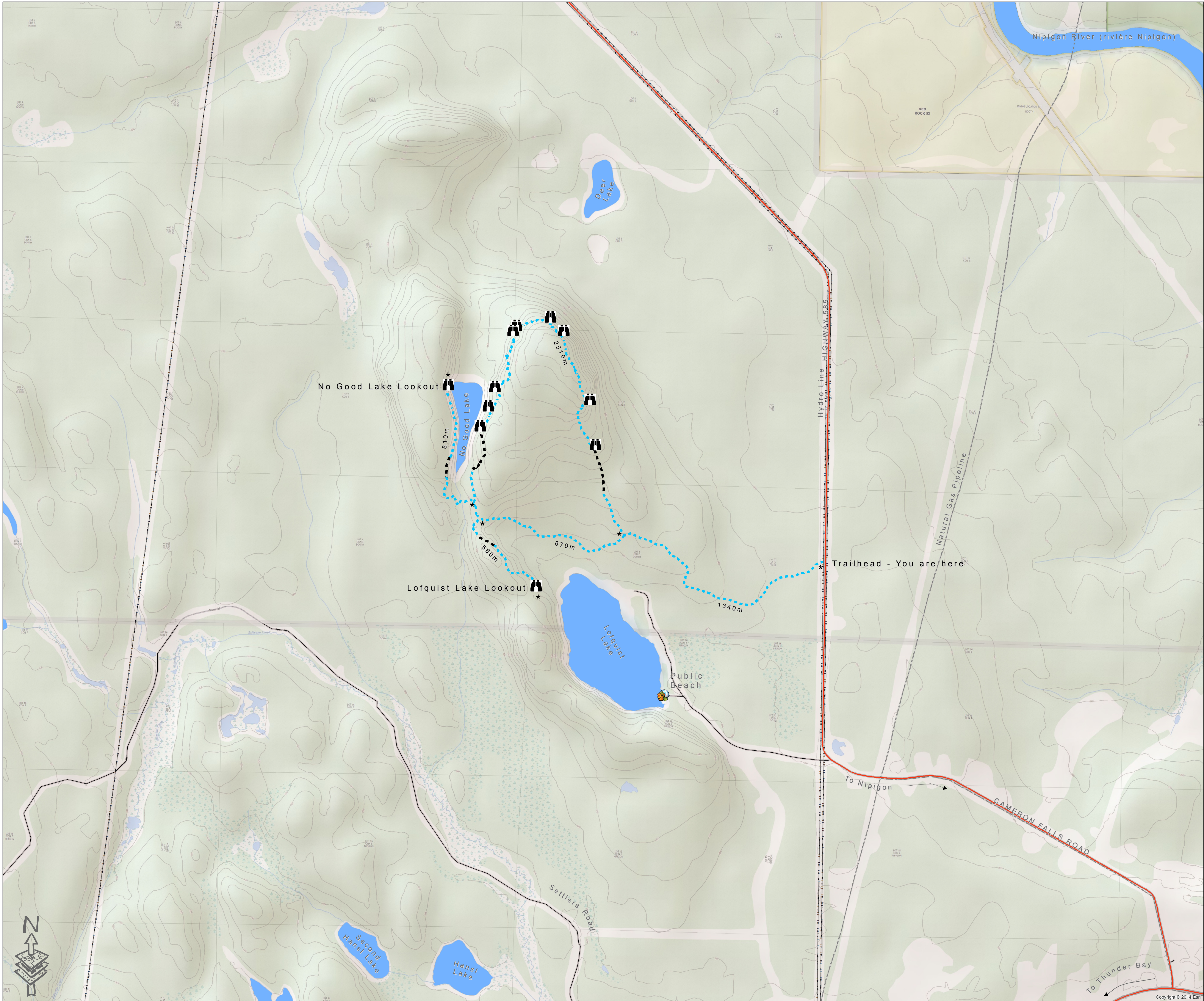


Deer Lake Mountain Hiking Trails



Deer Lake Mountain Trail

Distance: 6.2 km return
Estimated Time: 3-4 hrs round trip
Elevation Gain: 145m
Difficulty: Moderate ■ Difficult ■
Description: Numerous lookouts from 145m cliffs provide breath-taking views of Lake Superior, Doghead Mountain, Kama Cliffs, Lake Helen, Deer Lake, No Good Lake and the Black Bay Peninsula.

Lofquist Lake Lookout

Distance: 560m
Estimated Time: 1/2 hr trip
Elevation Gain: 54m
Difficulty: Moderate ■
Description: Enjoy a beautiful view from high above Lofquist Lake toward Lake Superior.

No Good Lake Lookout

Distance: 810m
Estimated Time: 3/4 hr trip
Elevation Gain: 58m
Difficulty: Moderate ■
Description: From atop the cliffs on No Good Lake have a birds-eye view of Deer Lake Mountain.

Use Trails at Own Risk

These are wilderness hiking trails. They are signed and suitable for hikers with basic trail experience. There is uneven terrain, with rocky and wet sections. Fallen trees and brush re-growth may be encountered. Hike only on marked trails. Do not take shortcuts. Use caution at lookouts and cliffs. There are no barricades. Leave your worries on the trail. Take your litter home.

Emergency: Call 911
Location ID: #230 Hwy 585, Nipigon, ON
Please let us know if maintenance is needed: Call or text 887-4021

This trail is affiliated with the Nor'Wester Voyageur Trail Club, a member of the Voyageur Trails Association.

